

SUNDAY STAGE 2 - BAY 2

3 SHOOTING POSITION OPTIONS:

Left Window

Center Table

Right Counter

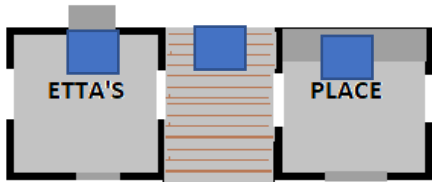
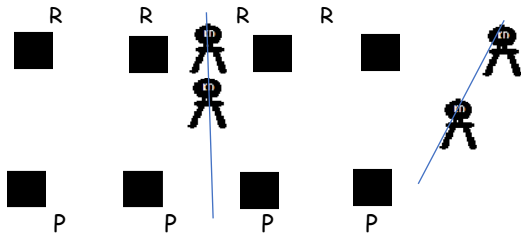
10 Pistol:

10 Rifle:

2+ Shotgun:

Any Gun may be staged/fired from any of the three position options

It is NOT necessary to use all three positions



GUN ORDER: Shooter's Choice, except Rifle may not be last

START: Position of choice **HANDS:** Holding gun of choice at ready

Indicate ready: " **This is gonna take a bit of figurin** "

AT THE BEEP:

PISTOL(S): Engage the four Pistol Targets.

Tripple-tap any two targets -- Double-tap the other two

Double and tripple-taps may be in any order

RIFLE: Engage the four Rifle Targets.

Tripple-tap any two targets -- Double-tap the other two

Double and tripple-taps may be in any order

SHOTGUN: Engage the SG Targets until down in any order

Note: Spotters please locate to be able to see all of the targets all of the time